

25°46.8'N 80°12.6'W

PURCHASER'S GUIDE

A HARBOR IN
THE HEART OF
THE RIVER

VISTA HARBOR

RESIDENCES & YACHT CLUB

Building Overview

Continuing Henry Pino's vision of transformation along the Miami River, ATLA Development would like to introduce its latest inspiration, **Vista Harbor Residences & Yacht Club**, a 12-story condominium community featuring 242 residences, 37,000 SF of exclusive amenities, and fronting **650 feet along the picturesque Miami River**. The collection of residences, which include **studios and one- to four-bedroom residences**, are located across two separate towers with independent lobbies and amenities. This bold modern design offers unrivaled riverfront access, providing residents with **stunning views and easy connectivity to Biscayne Bay**. Experience a blend of contemporary design and premium amenities, ensuring a sophisticated lifestyle in the heart of Miami.

Residences Features

These riverfront residences define an elevated lifestyle through openness and an effortless connection to the water. Thoughtfully curated interiors feature floor-to-ceiling glass and expansive terraces that invite natural light and sweeping river views. With direct access to Biscayne Bay, Vista Harbor blends refined design with resort-style living.

- Spacious private balconies in all residences
- Open, light-filled layouts
- Generous floor plans with expansive glass windows providing views of Downtown Miami, Brickell or Biscayne Bay
- Primary bedrooms feature walk-in closets
- Stackable GE washer and dryer
- Custom Italian kitchen cabinetry
- Kitchen islands or peninsulas for seating
- Smart access using keyless entry
- Stainless steel kitchen appliances, including Sub-Zero refrigerator/freezer and Wolf dishwasher, cooktop and microwave
- Pre-wired for high-speed communication and data connection
- Ceiling heights are approximately 9 feet, with units on the recreation deck having 12-foot ceilings
- Double-height, floor-to-ceiling windows in penthouse units
- Illuminated vanity mirrors
- Rain shower heads in primary bathrooms and custom vanities





Location

- Located in the heart of Miami along the Miami River, and only minutes by boat to many of Miami's popular restaurants including Bagatelle, Kiki on the River, Seaspice and Habibi
- A private dock allows you to cruise the city on your own boat turning the river into a natural extension of daily life
- Minutes away from the University of Miami Health campus and Jackson Memorial Hospital, the second largest public health district in the United States
- Quick highway access connects you to Downtown Miami, Midtown, Edgewater, Miami Beach, and the Design District, and many of Miami's most vibrant destinations
- Easy access to major transportation hubs such as Miami International Airport, Port of Miami, and the Brightline Train Station
- Anchored by Publix supermarket, the River Landing mall is located within a 5 minute drive and has 315,000 square feet of retail space consisting of nine restaurants and 21 retailers

A PLACE TO ARRIVE



A PLACE TO RENEW



Home Sharing Flexibility

- Minimum 7-day short-term rental permitted on the West tower
- Furniture package options offered for sale to create a turnkey, rental-ready opportunity
- On-site short-term rental support services, assisting residents with leasing needs

VRBO | HomeAway | Airbnb | Booking.com | Tripadvisor | Expedia | FlipKey | Villas Direct | VacationRentals.com | TurnkeyHotels.com | Priceline | Orbitz | Trivago | Hotwire | Kayak | Travelocity | Homestay | HomeToGo | Vacasa | Tripping | Atraveo | OneFineStay | Interhome | 9flats



Services

- Front desk concierge for residents and guests
- On-site general manager
- 24-hour security

Rental Support

On-site rental services, assisting residents with leasing needs.

Visionaries



Developer
ALTA Development LLC



Architect
FormGroup Architects



Services & Amenities

Designed as a private retreat along the river, the services and amenities offer a seamless escape from the pace of everyday life. Centered around the calming presence of the water, each space and experience is thoughtfully curated to promote relaxation, connection, an effortless living – where personalized services, resort-style amenities, and the natural rhythm of the river come together to create a serene waterfront sanctuary.

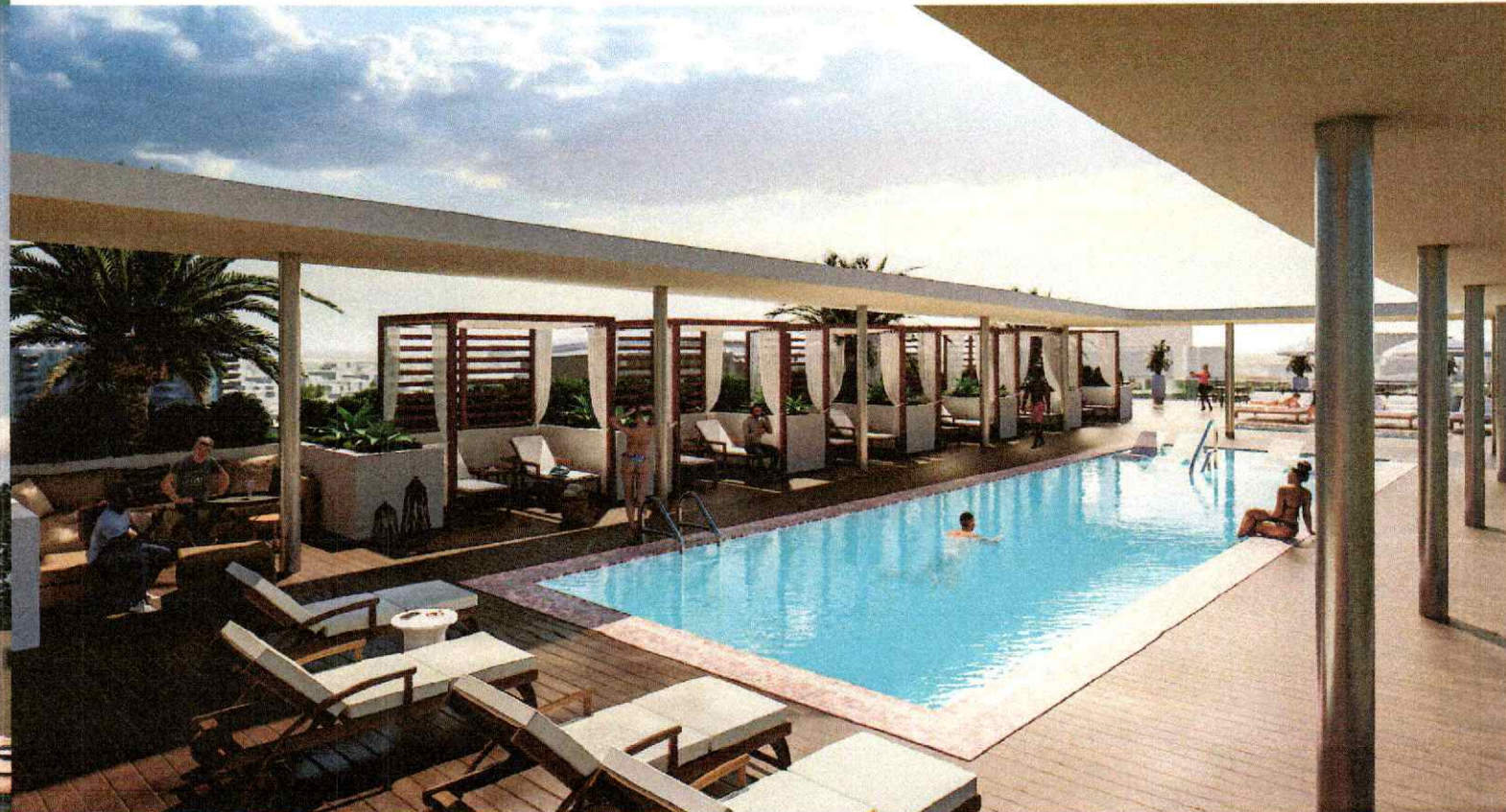
RESIDENT EXCLUSIVE AMENITIES

- 24-hour security
- Front desk concierge
- On-site general manager
- Rooftop Pool Deck with hot/cold plunges, private cabanas and chaises overlooking the Miami River with an unobstructed view of Downtown Miami and Brickell
- Business center with co-working stations
- Outdoor Pickleball Park with two outdoor pickleball courts and green area
- Relaxing sauna
- State-of-the-art fitness centers perfect for private training or group classes
- Yoga room
- Lobby library/wine room provides a quiet, cozy reading room and lounge for gathering
- Self-service dog salon
- Club room outfitted with a smart TV, adjacent kitchenette for private gatherings and a professional pool table for seamless entertainment
- On-site restaurant and beach club
- Marina access for private dockage along 650' of boardwalk along the Miami River accommodating yachts up to 250' in length
- Each residence tower has its own independent lobby and elevators
- Central open receiving area located between the two towers with 18' soaring ceilings

YOUR HARBOR



YOUR FREEDOM





25°46.8'N 80°12.6'W

DISCOVER THE FULL STORY.
SCAN TO EXPLORE.



(786) 800-2323

INFO@VISTAHARBORRESIDENCES.COM

555 NW S RIVER DR. MIAMI,
FL 33136

WWW.VISTAHARBORRESIDENCES.COM



Vista Harbor Residences (the "Condominium") is developed by 555 Alta Development LLC ("Developer"). All information contained herein is subject to change and you should rely solely on the representations set forth in the Developer's written materials and the Condominium's Prospectus. All illustrations, renderings, photographs, and images are conceptual in nature and may vary from the completed Condominium. Images are provided as examples only and do not reflect the actual design, finishes, or décor of the completed Condominium. Floor plans, unit layouts, locations of windows, doors, closets, plumbing fixtures, mechanical equipment, appliances, structural elements, architectural features, views, and the uses, configurations, and entries to rooms are subject to change based on final approved plans, permitting, and completed construction. Furniture layouts and uses of space shown are suggested only and are not intended to guarantee or represent any specific use of space. Furnishings, design features, and décor illustrated are not included with the purchase of a Unit. Certain amenities and features may require additional expense by the Unit owner. The Condominium may offer water views; however, it is not a waterfront property, and views will vary depending on the Unit purchased. No view, water or otherwise, is guaranteed. Balconies depicted are conceptual, and sizes may vary based on final permitting and completed construction. Consult the Developer's Prospectus for complete terms, conditions, specifications, estimated costs, unit views, what is included with a Unit purchase, and how Unit size is calculated. Pursuant to a license agreement, the Developer has the right to use the trade names, marks, images, and logos of Alta Development LLC for so long as the license agreement remains in effect. The Developer is not incorporated in, located in, nor a resident of New York. This material is not intended as an offer to sell or a solicitation of an offer to buy condominium units in New York or in any other jurisdiction where such offer or solicitation is prohibited by law. Reproduction for any purpose is not authorized. Artist's renderings of development, surrounding and neighboring buildings exclude.